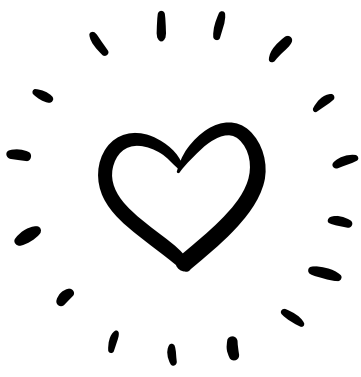


WE ARE LEARNING...



OUR SCHOOL VALUES

To be RESPECTFUL to my peers and teachers.
To show RESPECT by listening to others, sharing, packing up and including others in play and games.

Help me at home by acknowledging when I take turns, share, use my manners, look after my things and listen to others.

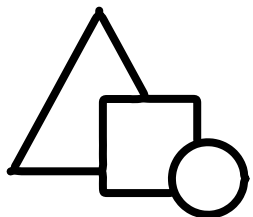
LITERACY

To expand our vocabulary by reading new books.
To continue making meaningful connections to the alphabetic code.
Recognise our first name.
To develop our print knowledge by listening to reading.
To develop speaking and listening skills when exploring learning environments and engaging in social games with peers.
To draw pictures that communicate a message.



Help me at home by reading to me, noticing new words and talking to me about them, encouraging me to draw and talk about my drawing.

NUMERACY



To begin to recognise numbers and use counting in the world around us.
To notice and create shapes, patterns, colours and mathematical concepts in our play and experiences.
To use mathematical vocabulary to communicate our thinking and observations.

Help me at home by encouraging me to observe numbers in my environment and counting out a small amount of objects together.

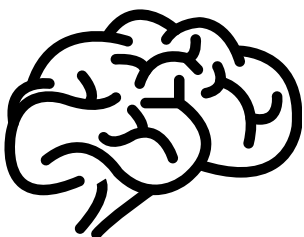
INQUIRY FOCUS

'I am a Scientist'

To explore our physical world by experimenting and investigating how and why things work in our preschool environment.
To develop an inquiring mind by asking questions about every day natural occurrences, such as weather events.



You can help me at home by noticing the world around me and sparking my curiosity by asking me questions, reading books about science together and noticing natural scientific phenomena.



LEARNER ASSETS

To collaborate with our peers and educators by sharing and taking turns.
To communicate our needs and wants.
To be curious learners by asking questions.

ROUTINES

Preschool library
Children are able to borrow as often as they like.

Amaroo Inspire Centre
We visit on Tuesdays and Fridays to read books together.

School assemblies
Whole school assemblies are usually held at 9:15am on Fridays throughout the school year.

HOME LEARNING - READ A STORY BOOK TOGETHER EVERY DAY