

Dear parent and carers,

As promised, I am writing with additional information about the return of students to our school campus. First, a reminder about the dates for our phased return.

Commencing 25 October (Week 4)	<ul style="list-style-type: none"> • Early childhood centres (ECEC) • Preschool and kindergarten • Years 1 and 2 • Year 6 • Years 9 and 10 • Out of school hours care (OSHC)
Commencing 1 November (Week 5)	<ul style="list-style-type: none"> • Years 3, 4 and 5 • Years 7 and 8
<i>From weeks 1 to 4 of term, onsite supervision and care continues to be available for vulnerable children and young people whose parents are essential workers.</i>	

Drawing on national and local health advice we have developed a return to school plan which has three key priorities:

- the health and safety of staff and young people,
- the mental and emotional well-being of students and staff, and
- ensuring continuity of learning.

Below is an outline of [ACT Health Guidelines](#) that schools are required to implement to ensure effective COVID-19 measures are in place.

Use of Check in CBR app	<p>Parents and carers cannot enter school grounds.</p> <p>Exceptions are:</p> <ul style="list-style-type: none"> • to pick up a sick student • access OSHC • drop off or pick up of students with special needs <p>Visitors must call in advance to make an appointment. All visitors must report to the main front office. All staff and visitors must check in using the 'Check in CBR' app.</p>
Student illness	<p>Staff and students who are unwell must not attend school and should stay home and get tested. Students who present unwell will be required to go home.</p>
Hygiene	<p>Schools will maintain and promote appropriate hand hygiene and respiratory hygiene practices. Students will need to wash hands and use hand sanitisers throughout the day. Students will not be allowed to share food or drink. This includes celebratory events such as birthdays.</p>

<p>Masks</p>	<p>Staff, visitors and students* in Years 7-12 must wear a face mask on campus. Students in Years 3-6 are encouraged to wear a mask if they are comfortable doing so. Students in Preschool to Year 2 are not required to wear a mask. Masks may not be suitable for students with a disability or medical condition and schools will make allowances for those students not to wear masks.</p> <p><i>* Students are required to wear their personal masks. Masks will be available at school for those who require them. Disposable masks need to be changed every four hours.</i></p>
<p>Physical Distancing</p>	<p>Physical distancing between children and young people is not always possible, particularly in single classrooms and school environments. It is however important for limiting the transmission of COVID 19. To promote physical distancing, we may adjust learning programs, breaktimes, our timetable as well as pick up and drop off arrangements. More specific information about what this means for your child is included below.</p>
<p>Environmental cleaning</p>	<p>Our school cleaning program includes regular cleaning of high touch services, frequently used objects, and play equipment. Children are not permitted to play on our play equipment before or after school.</p>
<p>Ventilation</p>	<p>All schools have been assessed to increase fresh air circulation and this may involve changes to ventilation, modified HVAC system settings and maximising the use of outdoor learning spaces. Due to these changes students are encouraged to dress in layers as appropriate.</p>
<p>Managing suspected cases</p>	<p>We are prepared to respond to a positive COVID-19 case on campus, should the need arise. ACT Health will provide direction to the school and community, which may result in a full or partial school closure. A student who presents with symptoms of COVID-19 will be isolated with suitable supervision, and parents will be required to collect their child. Symptomatic students will be required to wear a mask.</p>
<p>Will schools have routine testing for COVID-19?</p>	<p>Anyone with COVID-19 symptoms should get tested immediately. ACT Health is not recommending routine COVID-19 testing of children, young people or staff using rapid antigen testing.</p>
<p>Wellbeing supports</p>	<p>Wellbeing and learning supports will recommence with the return to school. Conversations with parents may be done remotely.</p> <p>For students with a medical vulnerability, parents and carers must consult a GP and provide medical advice to that effect to the front office. The school will make reasonable adjustments for their safe return. Where adjustments are unable to be made, the school will support your child to learn from home.</p>

To further support the ACT Health Guidelines our school is making the following adjustments.

Drop off and pick up	<p>Preschool</p> <p>Preschool parents and carers are asked to go to the preschool garden gate with their children from 8:45am. All parents and carers are required to wear a mask and maintain a minimum of 1.5m separation from other adults. A preschool assistant will meet parents and carers at the gate and welcome the children. Parents and carers are asked to farewell the children at this point and depart. The preschool assistant will then take the children to the preschool to see their teacher and start the day. We ask that parents and carers remain patient as the preschool assistant will collect a small group of children at a time.</p> <p>At pick up time, parents and carers are required to wait in a 1.5m socially distanced spaced line from the preschool garden gate. Preschool staff will identify parents and carers and guide the children to the gate to meet and leave. Parents and carers may come to the preschool garden gate from 2:45pm to enable a smooth flow for all the families and children to leave.</p> <ul style="list-style-type: none">• Gate 1 (closest to the kindergarten area of the main school building) Groups to use this gate – <i>Winyu, Dyurra, Bunduluck, Mundawari</i>• Gate 2 (closest to Good Shepherd School) Groups to use this gate – <i>Bural, Kagu</i> <p>Primary School (K-6)</p> <ul style="list-style-type: none">• Parents and carers are NOT to enter the school gates.• Parents and carers are encouraged to drop off all K-6 students as close to 9am as possible.• Due to carpark congestion, we encourage parents to walk with their children where possible.• Students going to after school care will be supervised in their classroom until 3pm.• Older students with responsibility for the collection of younger students are permitted to leave class at the specified departure time of the youngest student. Parents and carers must inform the classroom teachers via email in advance of this plan for the students.• Noting these arrangements, the school carparks will experience congestion. To reduce congestion older students are encouraged to walk or ride to school. Parents and carers may choose to arrange a meeting spot with students outside of our school grounds e.g., across the road or a local side street. All Amaroo school crossings are supervised. <p>Kindergarten</p> <ul style="list-style-type: none">• At 9am students enter through the bottom gates between preschool and kindergarten classrooms.• Kindergarten will finish at 2:40pm. Students are to be collected by parents and carers at the front of the school at the “Kiss and Drop” location. Students will be in their class groups with their teacher.• Kindergarten collection is 2:40 to 2:50pm. <p>Year 1</p> <ul style="list-style-type: none">• At 9am students enter through the bottom gates between preschool and kindergarten classrooms.• Year 1 will finish at 2:50pm. Students are to be collected by parents and carers at the front of the school at the “Kiss and Drop” location. Students will be in their class groups with their teacher.• Year 1 collection time is 2:50 to 3pm. <p>Year 2</p> <ul style="list-style-type: none">• At 9am students enter through gates between Year 2 classrooms and Administration building.
-----------------------------	---

- **Year 2** are to be collected by parents and carers at the front of the school at the “Kiss and Drop” location at 3pm. Students will be in their class groups with their teacher.
- Year 2 collection time is **3pm to 3:10pm**.

Year 3

- Year 3 students are to enter via the fishbowl entrance or top gate near the Onyx theatre at **9am** and exit at **3pm**.

Year 4

- Year 4 students are to enter via the gate between the Administration building and GLA building at **9am** and exit at **3pm**.

Year 5

- Year 5 students are to enter via the gate between the Administration building and GLA building at **9am** and exit at **3pm**.

Year 6

- Year 6 students are to enter via the gates between Year 2 classrooms and Administration building at **9am** and exit at **3pm**.

Diamond Program (K-6)

- Primary Diamond students can be dropped off and picked up from the Diamond door in Early Childhood or the external gate to DSBA enclosed playground.

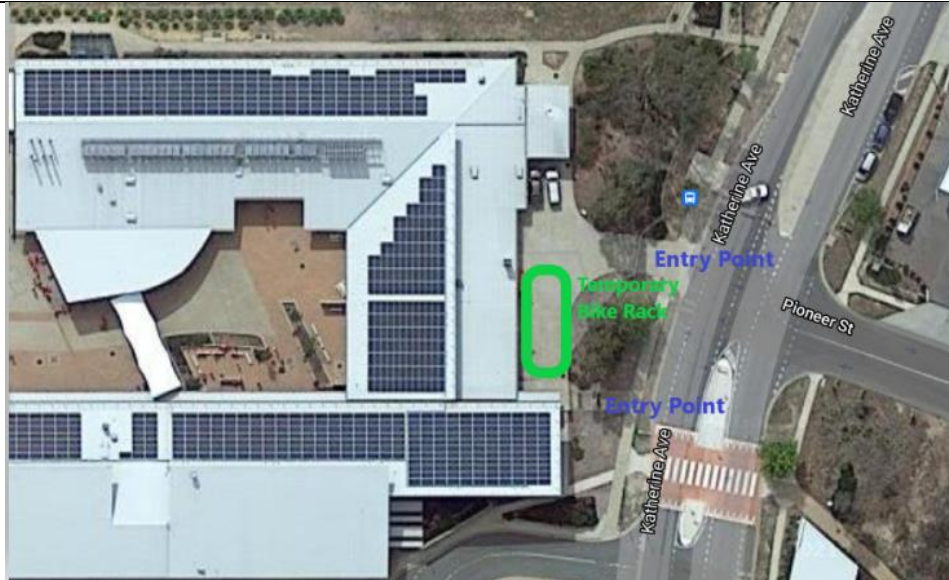
High School (7-10)

High School have a slightly later start and a staggered finish time to minimise congestion at exit points. The start and finish times are as follows:

- **Year 7-10** students will commence at **9:08am**. Students are required to go directly to their first lesson. Morning attendance will be taken at the start of this first lesson and normal absence procedures apply.
- On Monday 25 October and 1 November, High School students will start with a 30-minute Amcares session commencing at 9:08am to reconnect and ensure students are familiar with the new health protocols.
- **Year 9 and 10** students will finish at **2:50pm** and are to leave the school grounds immediately.
- **Year 7 and 8** students will finish at **2:55pm** and are to leave the school grounds immediately.
- **Diamond Program (7-10)** parents and carers may come onsite for drop off and pick up as required.

Bike Rack changes

Due to the new build the old, covered bike rack at the end of the TAS building has been removed. A new temporary bike rack has been built behind the Woodwork and Music room. Access to this bike rack will be off Katherine Avenue. See map below.



<p>Hygiene routines</p>	<p>Students in Preschool to Year 2 will have supervised hand washing at regular points throughout the day. Students in Year 3-6 are encouraged to wash their hands on entry to the school grounds in the morning and will have access to hand sanitiser throughout the day. All students P-10 are required to sanitise their hands each time they enter the classroom and following B1 and B2. Students are encouraged to bring their own mask and hand sanitiser.</p> <p>Students are required to bring refillable drink bottles as all bubblers have been turned off. Drink bottle refill stations are available throughout the school.</p>
<p>Teaching and learning</p>	<p>Staffing timetables have been adjusted to ensure six distinct cohort groupings. This is to reduce mixing of staff and students outside of the cohort groupings as much as possible.</p> <p>Cohort Grouping 1: Preschool Cohort Grouping 2: Kindergarten to Year 2 Cohort Grouping 3: Years 3 to Year 6 Cohort Grouping 4: Years 7 Cohort Grouping 5: Years 8 Cohort Grouping 6: Years 9 and 10</p> <p>Unfortunately, this means we will need to cancel the following:</p> <ul style="list-style-type: none"> • Breakfast club • Primary B2 lunch clubs • Defence club • Year 5 and 6 band • Whole school and sector assemblies and events. • The library will be closed before school, B1 and B2 • Unakite will be closed B1 and B2 <p>Programs that will continue:</p> <ul style="list-style-type: none"> • High School Amstudy will continue to run online, students will be able to access this from home after school. • High School students can access the Student Engagement Hub by appointment only.
<p>Break times</p>	<p>Amaroo School has designated break times for Primary B1 and B2 and High School B1 and B2. A wet weather contingency plan is in place for designated areas for each year group.</p>
<p>Before and</p>	<p>Before and after school care will operate as usual from the school gym.</p>

After School Care	Parents and carers can access school grounds to drop off and pick up students from before and after school care as this requires a sign in/out procedure. Parents must wear a mask, use the Check In CBR app and leave the school grounds immediately.
School canteen	<p>The school canteen will be open from Monday 25 October for lunch orders only.</p> <p>There we be no over the counter sale of food.</p> <p>All food to be ordered through Flexischools Online Ordering and must be placed by 9am on the same day:</p> <ul style="list-style-type: none"> • Primary can only order food for B2 • High School can only order food for B1 <p>Primary lunch orders will be delivered to classrooms ready for B2.</p> <p>High School lunch orders will be available for pick up at the external canteen windows from 11:15am (start of B1). No other food will be available.</p>

We will continue to review and adjust these measures based on the most up to date advice from ACT Health.

Remember, all adults and children aged 12 years and above are eligible for vaccination. If your child is eligible but not yet vaccinated, we encourage you to book them in by calling the COVID-19 vaccination line on 5124 7700 daily between 7am-7pm. Bookings can also be made with some [GP clinics and pharmacies](#).

We understand that there has been considerable change and uncertainty for our students during the pandemic, and as we transition back to school. I would like to remind you that you and your child can book an appointment with our Telehealth Support Service on 02 6205 1559 between 9:00am and 4:30pm weekdays. With the return to school, your child will also be able to organise face to face sessions with the school psychologist.

For more information about the return to schools, I would recommend visiting [the Education Directorate's website](#).

You can keep up to date with the latest health information, advice and resources on the [ACT's COVID-19 website](#).

I would also like to take this opportunity to thank you for your support and understanding as we return to face-to-face schooling.

We look forward to seeing all our students back at school.

Kind Regards



Gai Beecher
Executive Principal
Amaroo School